

Warranty

UNICLIC®

Laminate Warranty, Installation, & Care/Maintenance Instructions

What we cover and for how long

Manufacturer warrants to the original residential purchaser for a period indicated on this carton from the original date of purchase, that:

1. The design layer of the floor will not stain, wear through or fade from normal sunlight or artificial lighting under normal use conditions in a dry indoor residential setting.
2. The design layer of the floor will resist permanent staining caused by pet urine from dogs and cats when the floor is thoroughly cleaned and the pet urine has not dried on the floor.
3. The floor will be free of manufacturing defects.
4. The floor will resist water damage due to moisture from normal use conditions (cleaning and water spills) when you follow our recommended cleaning and care practices and when spills are removed within 24 hours.

What you must do to keep the warranty in effect
You must install and maintain your floor according to the installation and cleaning instructions.

Your floor must be installed in a dry, level, climate controlled, indoor residential environment (temperature range of 64°-86°F (18°-30°C) and humidity range of 35% to 75%.)

You must keep your proof of purchase, the end carton label that identifies the product and other documents and receipts, such as your installation invoice.

What this warranty does not cover

We do not cover any installation costs, including labor or accessories, for flooring installed with known defects. You must inspect all planks for recognizable defects before and during the installation.

We do not cover surface wear or damage resulting from abusive conditions, misuse of the product, freight damage, modification, alteration, repair or service by anyone other than the authorized Manufacturer's representative, or accidents, including but not limited to severe impact, scratching, cutting, negligence or chemical damage.

We do not cover scratches, indentations and marks that continue across multiple planks. Gloss reduction is not surface wear.

Surface wear must be readily visible from the distance of 6 feet, measuring at least 1 square inch.

We do not cover damage that is caused in whole or in part due to moisture underneath the floor.

We do not cover water damage caused by natural disasters, standing water (e.g. from appliance failures), excessive moisture emissions from a concrete slab (more than 5 lbs. per 1,000 sq. ft. over a 24-hour period), hydrostatic pressure, corrosive liquids or outside water (from snow, rain or water which enters through an open window or door, etc.)

We do not cover damage from pet urine that has been allowed to dry on the floor.

We do not cover molding, underlayment, vapor barrier and accessories.

We do not cover damage from rotating beater bars, steam cleaners, abrasive scrubbers, excessive wet mopping, waxes, or similar cleaning and care methods.

We will not review claims unless you purchased the floor from an authorized retailer in the original packaging.

How to make a claim

To make a Warranty claim, contact your retailer or distributor in writing within 30 days after you detect a potential defect.

What we will do to correct problems

If we approve a claim, we may choose to repair, replace, or refund the original cost of the defective materials. If the product is no longer available, you will be able to choose from our current designs of equal or lesser value. We warrant products that we have repaired or replaced only for the remainder of the original Limited Warranty period. We reserve the right to inspect installed flooring and to remove samples if needed. We may also pay reasonable labor costs to repair or replace any defective product if the floor was professionally installed and a claim is submitted during the first year after installation. This Limited

Warranty is a diminishing warranty. If we approve a claim after the first year following the date of installation, we will pay a pro-rated percentage of your floor cost based on the warranty period (50 years for lifetime warranties) and the date of purchase. For example, if you purchase a product that has a 50 year warranty and you make a claim 20 years after the original purchase, we would pay 30/50th (60%) of the original floor cost if the claim is approved.

DISCLAIMERS AND HOW STATE LAW MAY RELATE TO THIS WARRANTY

MANUFACTURER DISCLAIMS, TO THE FULLEST EXTENT PERMITTED BY FEDERAL AND STATE LAW, ALL OTHER WARRANTIES AND GUARANTEES, WHETHER EXPRESS OR IMPLIED; INCLUDING ANY IMPLIED REPRESENTATION OR WARRANTY AS TO MERCHANTABILITY OR FITNESS FOR ANY PARTICULAR PURPOSE. MANUFACTURER WILL NOT BE LIABLE FOR CONSEQUENTIAL, INCIDENTAL, SPECIAL OR EXEMPLARY DAMAGES. SOME STATES DO NOT ALLOW FOR THE EXCLUSION OF CONSEQUENTIAL DAMAGES, SO THIS EXCLUSION OF CONSEQUENTIAL DAMAGES MAY NOT APPLY TO YOU. THIS WARRANTY GIVES YOU SPECIFIC LEGAL RIGHTS AND YOU MAY HAVE OTHER RIGHTS THAT MAY VARY FROM STATE TO STATE. THIS WARRANTY CONSTITUTES THE ENTIRE AGREEMENT OF THE PARTIES, AND NO WAIVER OR AMENDMENT SHALL BE VALID UNLESS IN WRITING AND SIGNED BY AUTHORIZED REPRESENTATIVES OF MANUFACTURER.

LIMITED COMMERCIAL USE WARRANTY

If this laminate flooring offers a limited commercial warranty, we warrant to the original purchaser for the number of years listed as "commercial" that the design layer will not stain, wear through or fade from normal sunlight or artificial lighting or stain under normal use conditions in a light commercial setting. This limited commercial warranty includes all of the above conditions.

This Limited Warranty, dated February, 2021, supersedes all prior warranties.

IMPORTANT HEALTH NOTICE FOR MINNESOTA RESIDENTS ONLY: THESE BUILDING MATERIALS EMIT FORMALDEHYDE. EYE, NOSE, AND THROAT IRRITATION, HEADACHE, NAUSEA AND A VARIETY OF ASTHMA-LIKE SYMPTOMS, INCLUDING SHORTNESS OF BREATH, HAVE BEEN REPORTED AS A RESULT OF FORMALDEHYDE EXPOSURE. ELDERLY PERSONS AND YOUNG CHILDREN, AS WELL AS ANYONE WITH A HISTORY OF ASTHMA, ALLERGIES, OR LUNG PROBLEMS, MAY BE AT GREATER RISK. RESEARCH IS CONTINUING ON THE POSSIBLE LONG-TERM EFFECTS OF EXPOSURE TO FORMALDEHYDE. REDUCED VENTILATION MAY ALLOW FORMALDEHYDE AND OTHER CONTAMINANTS TO ACCUMULATE IN THE INDOOR AIR. HIGH INDOOR TEMPERATURES AND HUMIDITY RAISE FORMALDEHYDE LEVELS. WHEN A HOME IS TO BE LOCATED IN AREAS SUBJECT TO EXTREME SUMMER TEMPERATURES, AN AIR-CONDITIONING SYSTEM CAN BE USED TO CONTROL INDOOR TEMPERATURE LEVELS. OTHER MEANS OF CONTROLLED MECHANICAL VENTILATION CAN BE USED TO REDUCE LEVELS OF FORMALDEHYDE AND OTHER INDOOR AIR CONTAMINANTS. IF YOU HAVE ANY QUESTIONS REGARDING THE HEALTH EFFECTS OF FORMALDEHYDE, CONSULT YOUR DOCTOR OR LOCAL HEALTH DEPARTMENT. WARNING! DO NOT MECHANICALLY CHIP OR PULVERIZE EXISTING RESILIENT FLOORING, BACKING, LINING FELT, ASPHALTIC "CUT-BACK" ADHESIVES OR OTHER ADHESIVES. PREVIOUSLY INSTALLED RESILIENT FLOORING MAY CONTAIN EITHER ASBESTOS FIBERS OR CRYSTALLINE SILICA. THE PRODUCTS IN THIS BOX DO NOT CONTAIN ASBESTOS. AVOID CREATING DUST. INHALATION OF SUCH DUST IS A CANCER AND RESPIRATORY TRACT HAZARD. SMOKING BY INDIVIDUALS EXPOSED TO ASBESTOS FIBERS GREATLY INCREASES THE RISK OF SERIOUS BODILY HARM. UNLESS POSITIVELY CERTAIN THAT THE PRODUCT IS A NON-ASBESTOS CONTAINING MATERIAL, YOU MUST PRESUME IT CONTAINS ASBESTOS. REGULATIONS MAY REQUIRE THAT THE MATERIAL BE TESTED TO DETERMINE ASBESTOS CONTENT AND MAY GOVERN THE REMOVAL AND DISPOSAL OF MATERIAL. SEE CURRENT EDITION OF THE RESILIENT FLOOR COVERING INSTITUTE (RFCI) PUBLICATION "RECOMMENDED WORK PRACTICES FOR REMOVAL OF RESILIENT FLOOR COVERINGS" FOR DETAILED INFORMATION AND INSTRUCTIONS ON REMOVING ALL RESILIENT COVERING STRUCTURES.

REMEMBER, this floor is made from real wood, not plastic. Using too much water or any other liquid cleaning solution could result in the planks swelling, creating permanent damage to your floor. This would NOT be covered by Manufacturer's warranty.

Installation

UNICLIC®

For successful installation, remember:

1. Acclimate for 48 hours before installing (ie. purchase on Thursday, install on Saturday.)
2. Identify the tongue side and the groove side. The tongue side (the smaller extension without a ridge on it) goes against the beginning wall.
3. Install vapor barrier if subfloor is cement (6 mil polyethylene film).
4. Always use an underlayment padding above the vapor barrier and below the laminate flooring planks. If pad is pre-attached, no additional underlayment should be used.
5. Install parallel to the main light source.
6. Before cutting, plan your installation so each plank is at least 12" long and that the first and last rows are at least 2.5" wide.
7. No transition strip is required when the length or width of installed planks measures less than 40', or in doorways unless plank direction changes.

Tools and supplies required:

Foam underlayment for laminate floors
 • Spacers (min 5/16" - max 3/8") • Saw • Adhesive tape • Minimum 6 mil poly vapor barrier (plastic sheeting) for crawl space and concrete floor installations • Rubber mallet • Ruler • Pencil • Tape measure • Utility knife • Pull bar • Tapping block • Flexible 100% silicone sealant • Felt protectors • NIOSH mask • Gloves • Safety Glasses

IMPORTANT PRE-INSTALLATION

INFORMATION – Make sure subfloor is clean, dry and flat (maximum 3/16" deflection over 10'.) Always use safety glasses and a mask. Visit our website for more help.

Suitable subfloors for Laminate Flooring are:

- Existing floor surfaces including hardwood floors, linoleum, resilient vinyl, PVC (plastic floor surfaces must be permanently attached to the subfloor).
- Cement floors on all grades/elevations (maximum residual moisture 2.0 CM%). With a calcium chloride test, the maximum acceptable reading is 5.0 lbs/24 hours/1000 sq. ft.
- Anhydrite and Anhydrite tiles, Magnesium Cement (max residual moisture 0.3 CM%)
- Wood subfloor moisture 14.5% maximum
- Concrete relative humidity 70% maximum

Attention! Without a documented measurement of residual moisture content, a claim against the

manufacturer for damages cannot be considered. Concrete sub-floors must always be covered with a 6 mil

vapor barrier even if linoleum, PVC or resilient vinyl is firmly attached to the concrete.

Installing underlayment

After thoroughly cleaning the subfloor, you should install a laminate floor foam underlayment. Run the foam underlayment in the same direction as the flooring planks. The underlayment should be butted side-by-side with no overlap. Tape seams together. If you are installing over a concrete subfloor, a 6-mil poly (plastic sheeting) is to be installed under the laminate floor foam underlayment. (Many foam underlayments already have this plastic sheeting pre-attached).

CLEANING & CARE

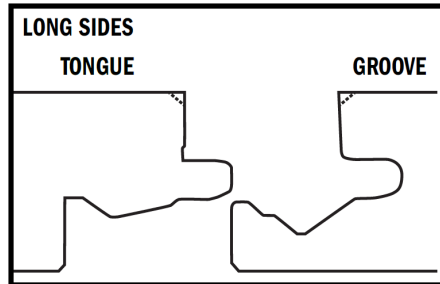
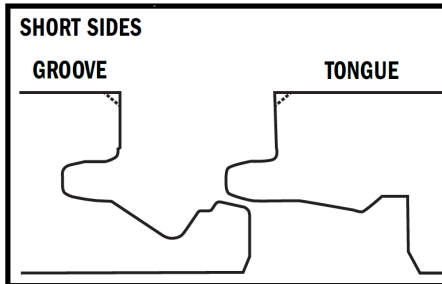
Congratulations on choosing your new moisture resistant laminate floor. This floor is made from wood and is virtually maintenance free. For routine care, just sweep, vacuum (use hard floor setting and no beater bar) and damp mop to keep your floor clean. If stubborn spots still remain, use a laminate floor cleaner.

General Do's and Don'ts

- Do damp mop by applying cleaning solution or water to the mop/cleaning cloth and not directly to the floor.
- Do use entry doormats at each entrance to your home to prevent dirt, sand, grit and other substances from being tracked onto the floor.
- Do use wide-bearing, non-staining floor protectors such as felt protectors, for chair legs and table legs.
- Do use protective mats under rolling chairs and keep furniture casters clean.
- Do not leave any amount of liquid (water, juice, soft drink, alcohol, etc.) on the floor for more than the time necessary to clean the spill. Immediately wipe up wet areas.
- Do not use any cleaning agents containing wax, oil or polish. Left over residue from these agents can leave a dull film on the floor.
- Do not apply cleaning solution or water directly to the floor; apply to the mop/cleaning cloth.
- Do not use abrasives, such as steel wool or scouring powder, as these could scratch the floor.
- Do not use a steam cleaner.
- Do not slide or roll heavy furniture or metal items across the floor.

Specific Cleaning Solutions

- Juice, wine, grease, chocolate: dampen a rag with water and a laminate floor cleaner and spot clean.
- Cigarette burns, asphalt, shoe polish, paint, ink, crayon, dried foods, nail polish: dampen a rag with rubbing alcohol or nail polish remover and spot clean.
- Candle wax, chewing gum: allow to harden and gently scrape with a plastic scraper.

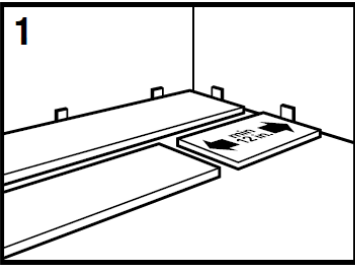


Installation

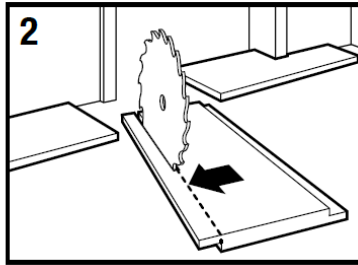
UNICLIC® - Continued

Installation Instructions

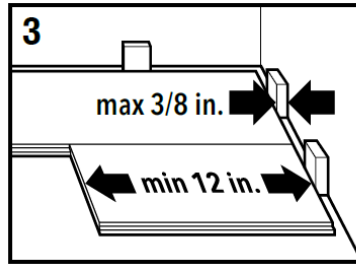
⚠ WARNING Drilling, sawing, sanding or machining wood products can expose you to wood dust, a substance known to the State of California to cause cancer. Avoid inhaling wood dust or use a dust mask or other safeguards for personal protection. For more information go to www.P65Warnings.ca.gov/wood.



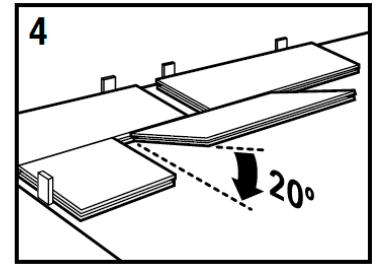
Before cutting, select your beginning wall and plan your installation. Lay planks tongue side facing the wall for the first 2 rows on the floor close to the wall. Each plank should be at least 12" long.



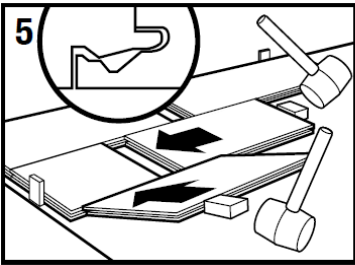
Remove the tongue side (see pictures above) on only the planks in the first row that face the wall to allow room for spacers.



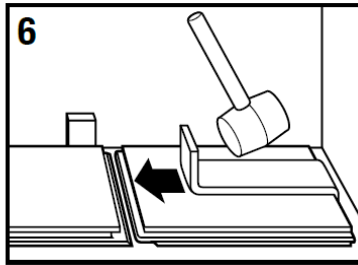
Always allow for 5/16" min to 3/8" max expansion at walls and around fixed objects. A transition strip is required when length or width of installed planks measures 40' and in doorways if plank direction changes.



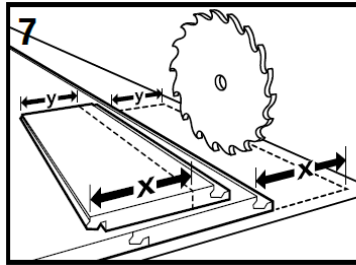
Lock in panel lengthwise. Allow a 12" minimum end-joint stagger row to row. Install first and second row at the same time to help ensure endjoints are perfectly square.



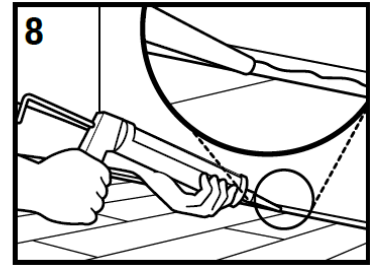
Use a 4"-6" piece at an angle to hold the tongue and the groove on the same plane, limit end-joint damage and ensure planks engage square. Tap end-joints with multiple taps, striking the tapping block evenly until end-joints close. **NOTE: Tapping too hard or striking the tapping block unevenly can result in installation-related damage or peaking.**



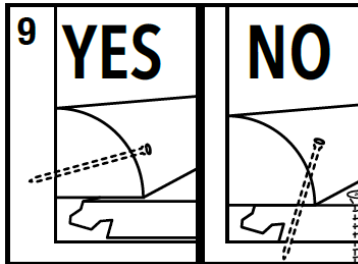
Fit the last panel in the row using a pull bar.



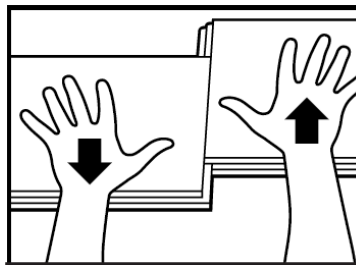
Repeat steps 4 through 6 until you reach the last row. Cut last row to size (2-1/2" minimum width).



Remove all spacers before installing trim. Create a water tight seal by applying flexible 100% silicone sealant along the perimeter of room and around fixed objects. Do not use acrylic sealant. To reduce the amount of sealant, first fill all expansion spaces with 3/8" compressible PE foam backer rod and cover with silicone sealant.



Prior to installing moldings, apply silicone sealant to the portion of the molding or transition that will rest on the laminate flooring surface. Install moldings and immediately wipe away excess sealant. Apply silicone sealant at connections to doorframes and other fixed objects. Ensure floor is able to "float". Do not nail planks or trim to floor.



DISASSEMBLING: Disengage entire row by lifting up row delicately at an angle. To separate individual planks, leave them on the ground and then carefully slide the planks apart as illustrated.

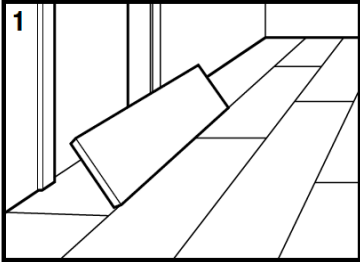
Installation Under Doorway Frames:

1. Slide plank under pre-cut door frame.
2. Tap the long side joint closed.
3. Tap the end joint closed.

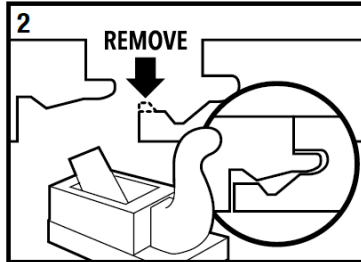
Installation

UNICLIC® - Continued

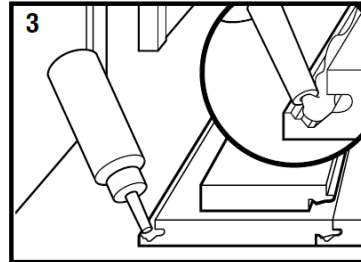
Working with Limited Clearance



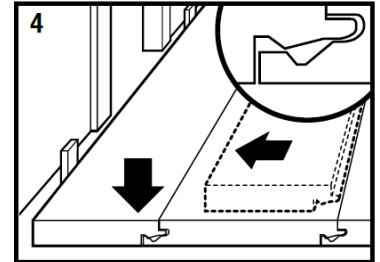
1
Some long edge joints cannot be installed using a 20° angle.



2
REMOVE
Remove top part of the groove profile.



3
Use good quality wood glue to make the connection.



4
Slide panel into space horizontally and slot into profile. Use these modified planks under doorframes, radiators, cabinet fronts, etc. Use the pull bar to slide the planks where needed.